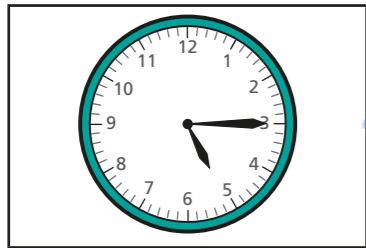
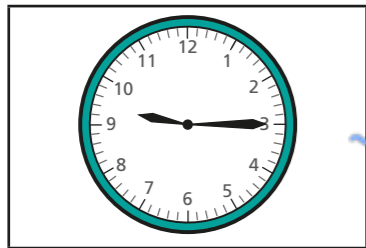


Quarter past and quarter to

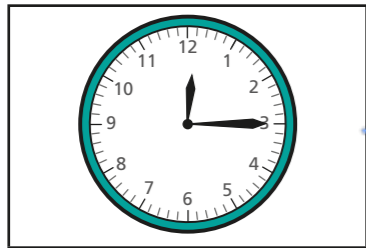
1 Match the clocks to the times.



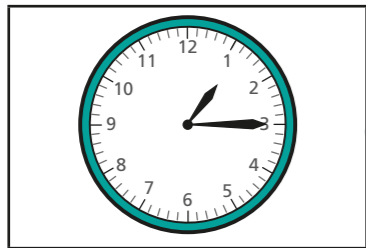
quarter past 1



quarter past 12



quarter past 9



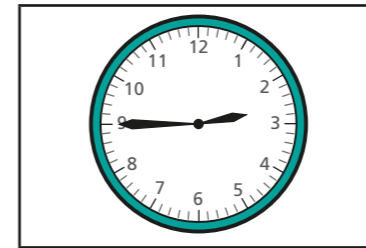
quarter past 5

Complete the sentence.

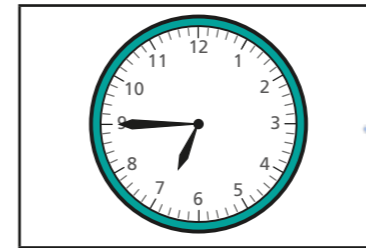
At quarter past, the minute hand points to

3

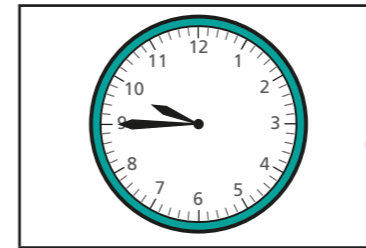
2 Match the clocks to the times.



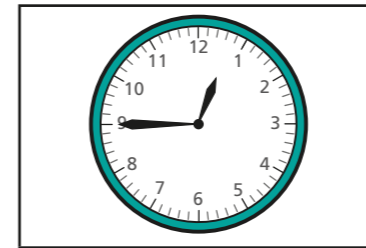
quarter to 10



quarter to 1



quarter to 7



quarter to 3

Complete the sentence.

At quarter to, the minute hand points to

9

3 Write the time shown on each clock.
Use the word bank to help you.

quarter to

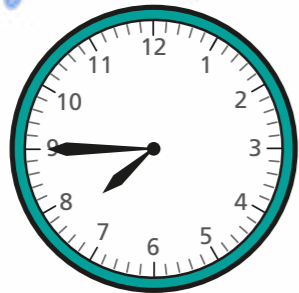
quarter past



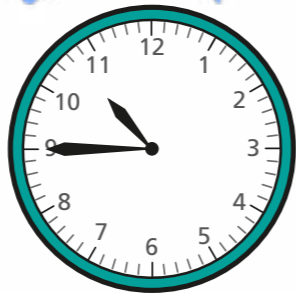
quarter past 5



quarter past 6

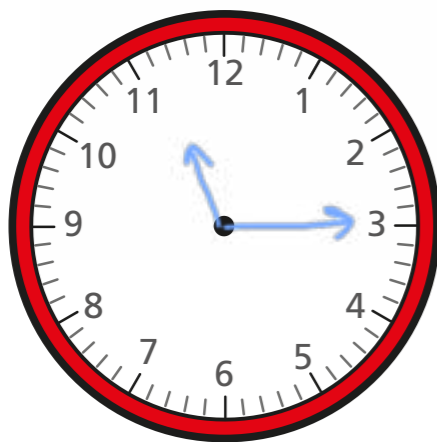


quarter to 8

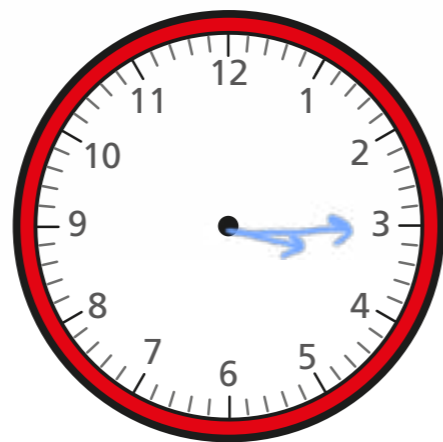


quarter to 11

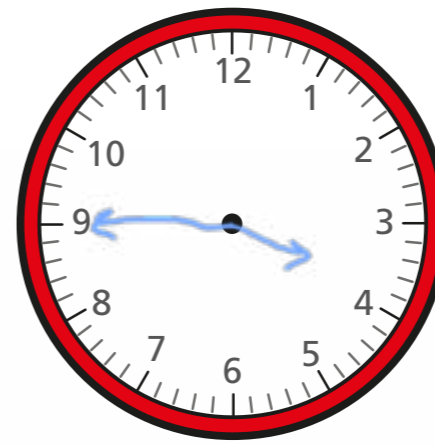
4 Draw hands to show the time on each clock.



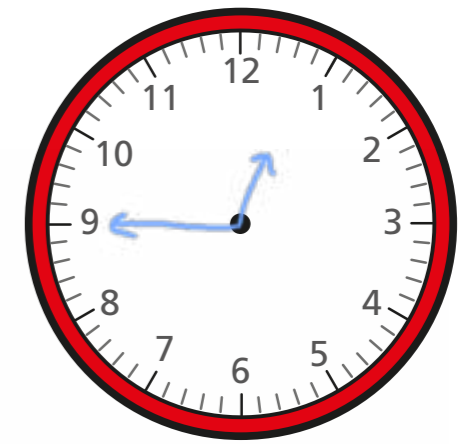
quarter past 11



quarter past 3

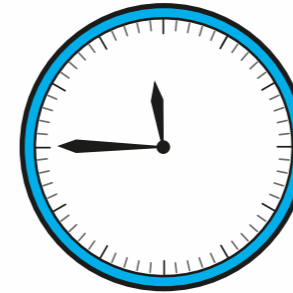


quarter to 4

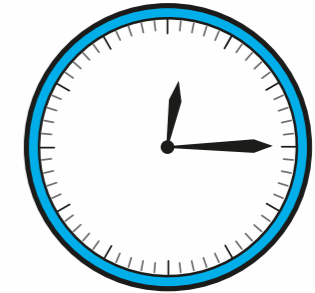


quarter to 1

5 The clocks have no numerals.

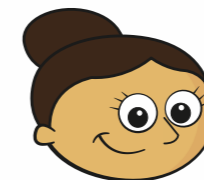


quarter to 12



quarter past 12

a)



You can still work out what time they show.

Why does Dora think this?

b) Write what time each clock shows.