

Timetables

1 Here is a bus timetable.

	Bus A	Bus B	Bus C
Green Park Road	08:45	09:00	09:15
Forrest Drive	09:05	09:20	09:35
Summerville Street	09:22	09:37	09:52
Penny Bridge	09:40	09:55	

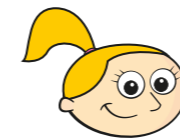
- a) What time does Bus A arrive at Green Park Road?
- b) What time does Bus B arrive at Summerville Street?
- c) What time does Bus C arrive at Forrest Drive?
- d) Each bus takes the same amount of time to get from Green Park Road to Penny Bridge.
What time does Bus C arrive at Penny Bridge?
- e) Eva needs to be at Summerville Street by 9:35
Which bus does she need to get from Green Park Road?

2 Here is an extract from a TV guide.

17:00	17:30	18:00	18:30	19:00	19:30	20:00
News	Catch It!	Giant George	Wilson Street	News	Detective Files	

- a) At what times is the news on? and
- b) What time does *Detective Files* start?
- c) How long is *Wilson Street* on for? _____
- d) Eva is working out how long *Catch It!* is on for.

Here are her workings.



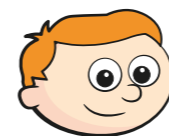
Catch It! is on for 85 minutes.

	7	9	
	1	8	: 10 10
-	1	7	: 1 5
	<hr/>		
	0	0	: 8 5
	<hr/>		

Do you agree with Eva? _____

Talk about it with a partner.

e)




The news is on for half an hour in total.

Do you agree with Ron? _____

Explain your answer.

3 Here is part of a train timetable.




St Pancras	06:25	06:40	06:55	07:05	07:22
Stratford	06:32	06:47	07:02	07:12	07:29
Ebbsfleet	06:43	06:59	07:15	07:23	07:40
Ashford	—	07:19	—	07:42	—
Gravesend	06:47	—	07:18	—	07:43

- a) How many of the trains go all the way from St Pancras to Gravesend?
- b) How long does the 06:40 take to get from St Pancras to Ashford?
 minutes
- c) Which train takes the least amount of time to get from St Pancras to Gravesend?

4 In this timetable, all the trains stop at every station and the time taken between stations does not change.

Fill in the missing information.



Aberford	08:30	11:00	13:10	
Cartown		11:22		
Donville			13:47	
Highborough			14:01	
Southland	09:57			16:03

5 Draw a timetable of your school day.

- a) How many minutes do you spend at school?
 minutes
- b) How many seconds do you have for your lunch break?
 seconds
- c) Write your own questions for a partner to answer about your timetable.

- d) Work with a partner to create your timetable for the rest of the week.
Work out how many hours, minutes and days you spend on each subject.

