



**RECEPTION: ALBY**  
Alby is measuring the depth of the snow in his garden to find where it is deepest. The snow on his mud kitchen was 11 inches deep and he found a 15 inch icicle.

**YEAR 1: HAZEL**



Hazel completed an online PE lesson and learnt how to travel in different ways. Well done Hazel!

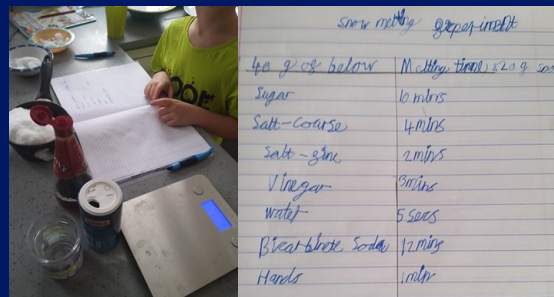
**YEAR 2: AURORA**

Aurora dedicated time to complete the challenges she was set on both spelling shed and maths shed. She had an aspirational and resilient attitude towards the challenges. Keep up the great work Aurora! Can you follow in her EdShed footsteps...

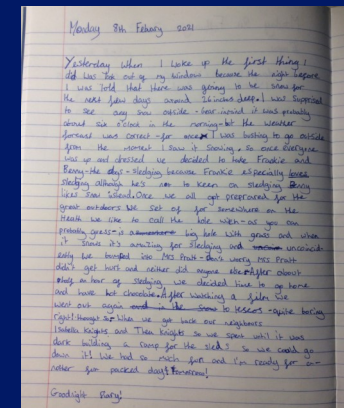


**YEAR 3: MAISIE**

Maisie has written up her information on submarines. The vocabulary that she has used throughout is wonderful and her attitude to learning is phenomenal. Well done!

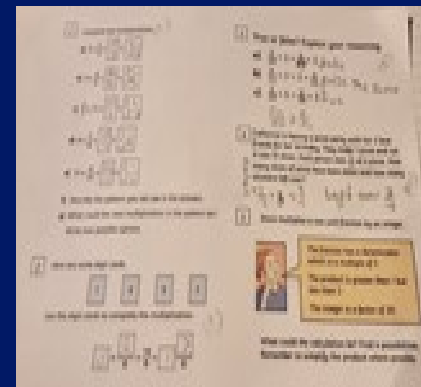
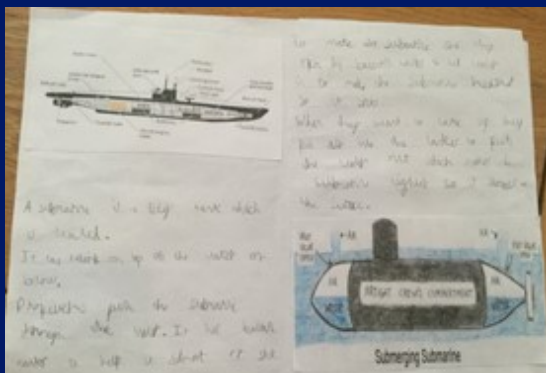


**YEAR 5: CORDELL**  
Cordell has been challenging himself every day in Maths when multiplying fractions, allowing him to make fantastic progress!



**YEAR 4: ETHAN**

Ethan has completed a science experiment based on what items would melt the snow quickest. We love that Ethan used different types of salt to see if there was a difference!



**YEAR 6: Lilly-Rei**  
Lilly-Rei has challenged herself in her writing, using a range of time conjunctions and ambitious punctuation such as dashes for parenthesis.