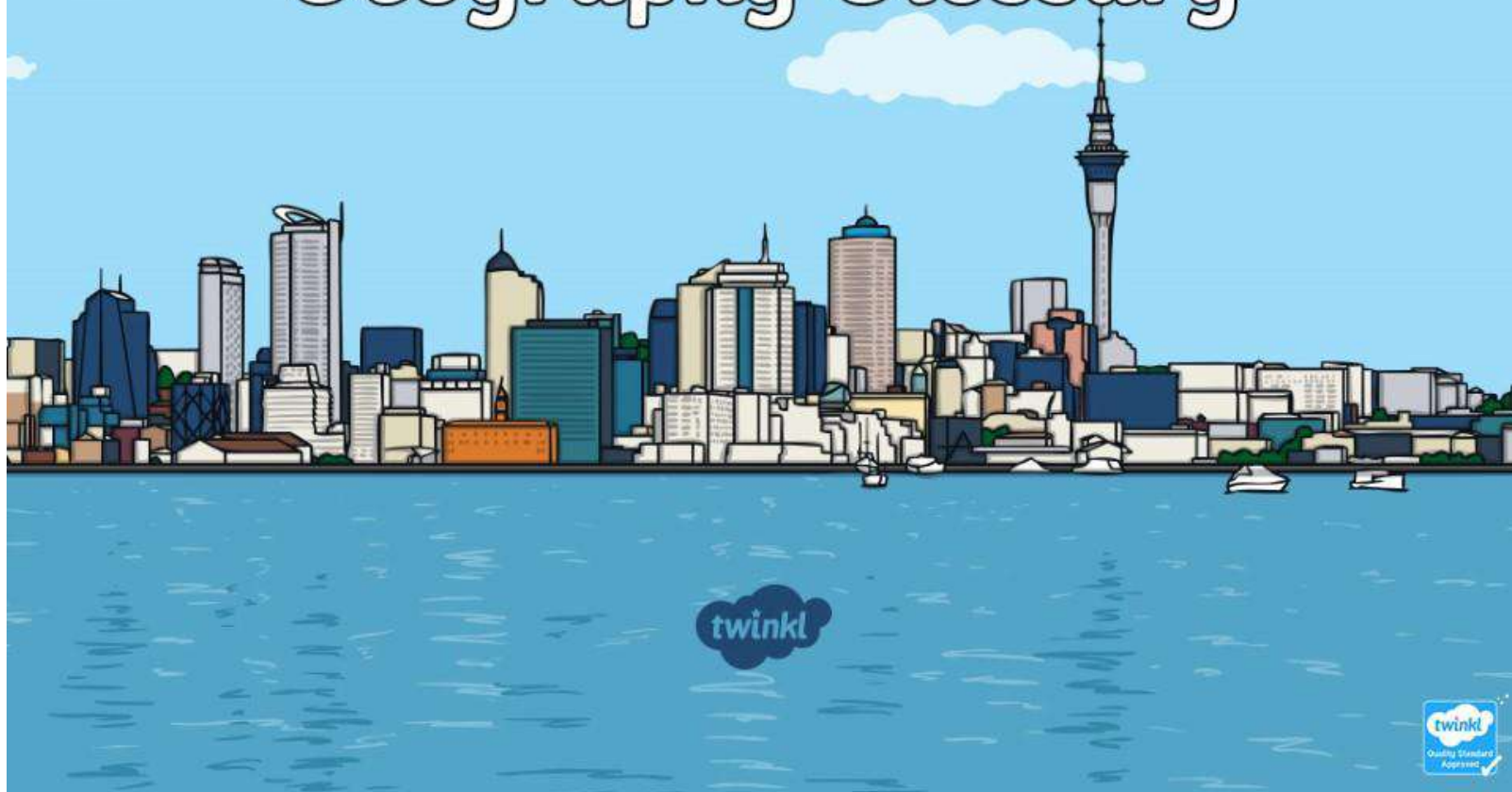


Physical and Human Geography Glossary



Physical



Beach

A beach is an area of sand or pebbles that leads to the sea.

Physical



Cliff

A cliff is a steep rock face, often along the edge of the sea.

Physical



Coast

The coast is the place where the land meets the sea.

Physical



Forest

A forest is a large, wooded area with a thick growth of trees and plants.

Physical



Hill

This is a naturally raised area of land, which is not as high as a mountain.

Physical



Mountain

A mountain is a very large, high and steep hill. Famous mountains include Mount Everest, Mount Fuji and Mount Kilimanjaro.

Physical



Sea

The sea is a body of salt water, which is part of an ocean.

Physical



Ocean

This is a large body of salt water, which covers the majority of the earth's surface. The five oceans in the world are the Pacific, the Atlantic, the Arctic, the Antarctic and the Indian oceans.

Physical



River

A river is a large, natural stream of fresh water that flows into the sea or a lake.

Physical



Soil

Soil is the top layer of the earth's surface, in which plants grow.

Physical



Valley

A valley is a long stretch of a low area of land in between hills.

Physical



Vegetation

Plant life, e.g. carrots, grass, shrubs.

Physical



Season

This is one of four divisions of the year (autumn, winter, spring and summer) often marked by different weather patterns and hours of daylight.

Physical



Weather

This is the day-to-day outdoor conditions, such as temperature, cloudiness and rainfall.

Human



City

A city is a large town. Each country has a capital city, which is usually one of the largest cities.

Human



Town

A town is a large group of houses, shops and factories where people live.
Towns are larger than villages but smaller than cities.

Human



Village

A village is a small group of houses, perhaps with a few shops, that are often in the countryside.

Human



Factory

A factory is a large building where goods are made in large quantities.

Human



Farm

A farm is an area of land used to produce crops or to breed animals and livestock.

Human



House

A house is a building designed for people to live in.

Human



Office

An office is a building of rooms where business and work is carried out by office workers.

Human



Port

This is a town or city with a harbour where ships can load and unload people or goods.

Human



Harbour

This is a place on a coastline where ships and boats can be kept safely.

Human



Shop

A shop is a building in which goods are sold. For example, supermarkets, clothes shops and toy shops.

