

# MPA Quiz

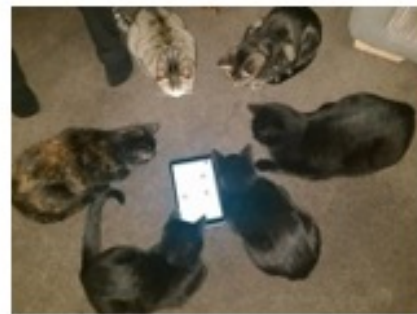


**Have fun, good luck !!!!!!**

# Guess whose pet this is?

The next page will have a selection of animal photos of pets that belong to staff. You have to try and guess who they belong to.

Some of them have visited school before!



Now for  
the  
answers.....

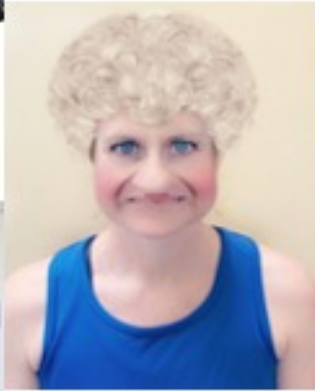
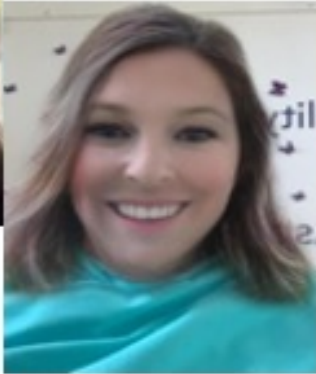
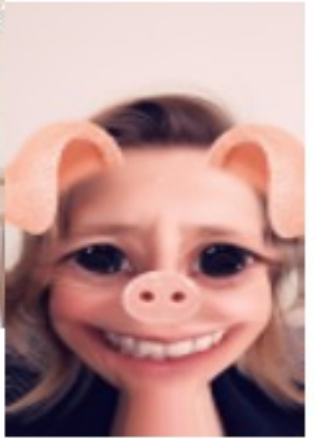
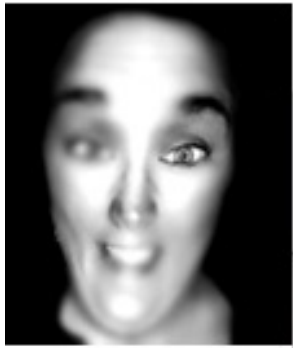




How many  
did you  
guess  
correctly?

# Staff in disguise.

12 staff members have provided a photo of themselves but not as you know them. You have to try and guess who they are in their disguise.



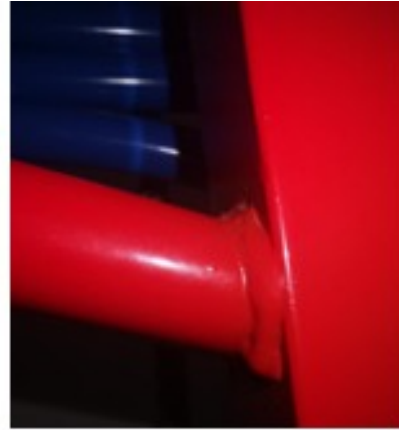
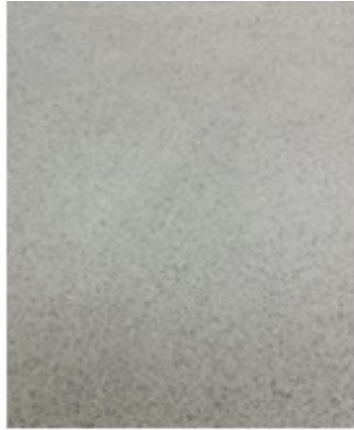
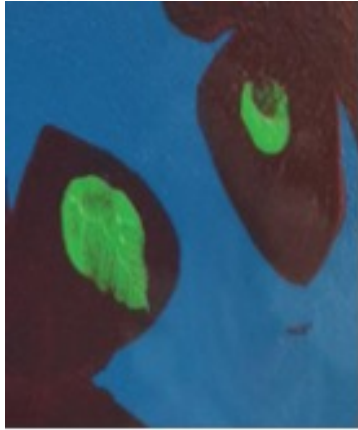




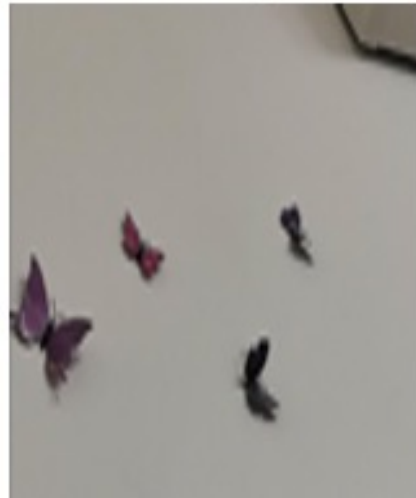
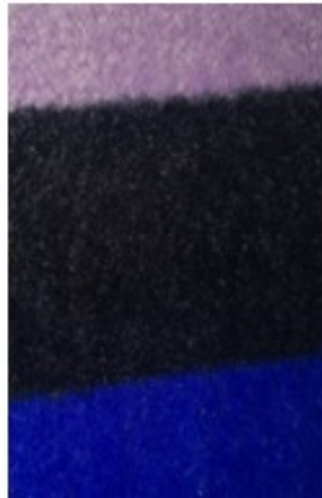
# Where / what is this?

On the next page you are going to see some zoomed in photos of things or places from inside school. Can you work out what they are?





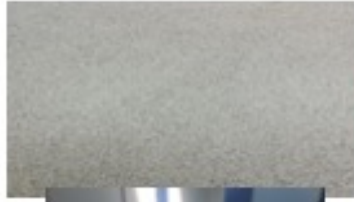
Do you recognise these things?



Flutterby elephant



Toilet floor



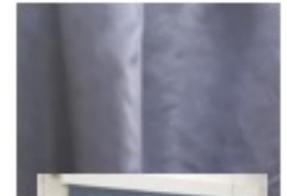
PE apparatus



Cloakroom



Hall curtain



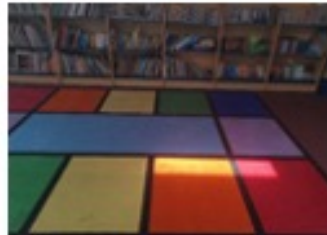
House points



Photocopier



Rug



Hall wall



School council box



# MPA Questions.

To finish off we have a few questions about our wonderful school.



1. What are the five learning powers?
2. Complete the sentence "We are MPA and we are....."
3. Name the four houses.
4. When did Miss Churchman start as the head teacher?
5. How much are the staff missing you?

1. What are the five learning powers?

**Respect, Responsibility, Resilience, Aspiration and Collaboration**

2. Complete the sentence "We are MPA and we are....."

**"We are MPA and we are proud"**

3. Name the four houses.

**Andromeda, Orion, Pegasus and Phoenix**

4. When Did Miss Churchman start as the head teacher?

**June 2017**

5. How much are the staff missing you all?

**Loads, so much, lots, an amazing amount, 100%**

**Stay safe!!!**  
**Miss you!!!**

