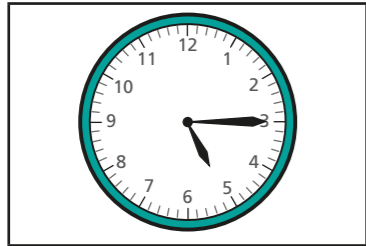
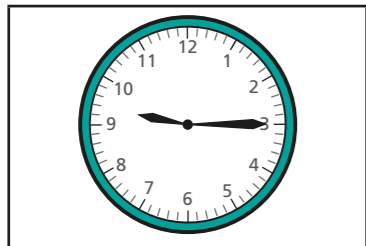


# Quarter past and quarter to

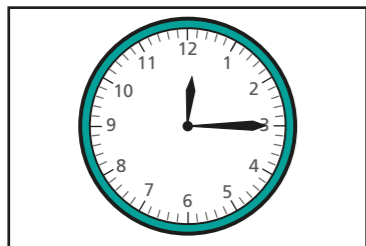
1 Match the clocks to the times.



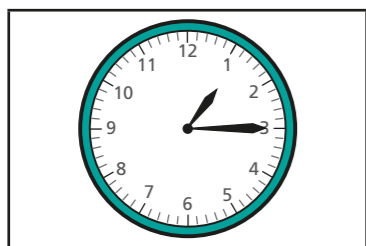
quarter past 1



quarter past 12



quarter past 9

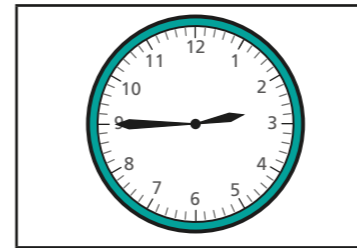


quarter past 5

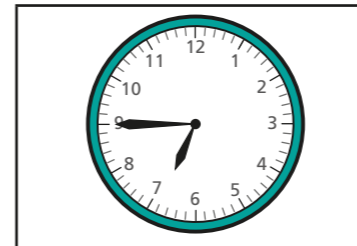
Complete the sentence.

At quarter past, the minute hand points to

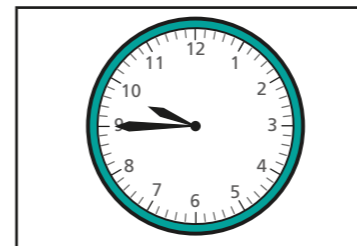
2 Match the clocks to the times.



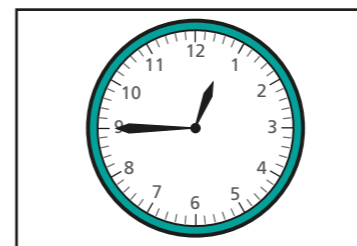
quarter to 10



quarter to 1



quarter to 7



quarter to 3

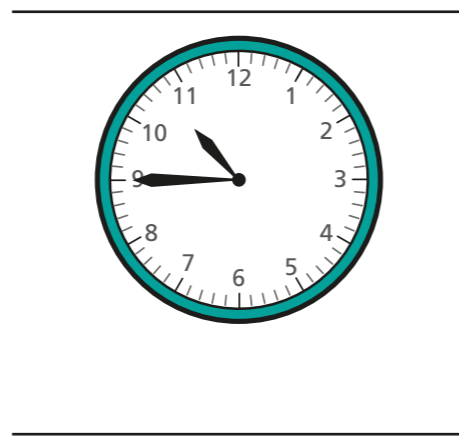
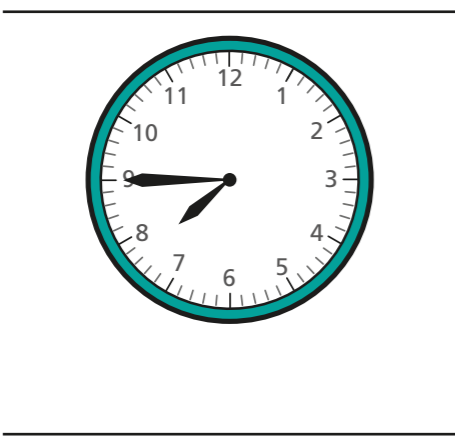
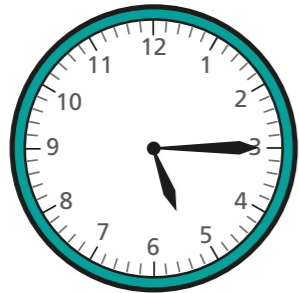
Complete the sentence.

At quarter to, the minute hand points to

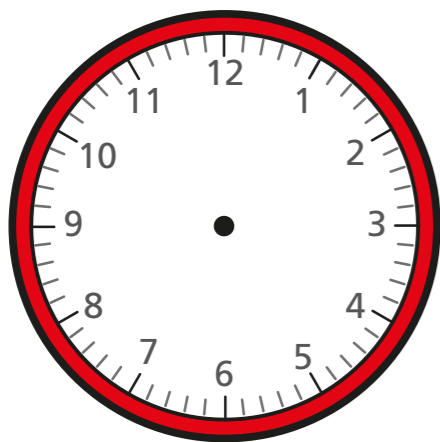
**3** Write the time shown on each clock.  
Use the word bank to help you.

quarter to

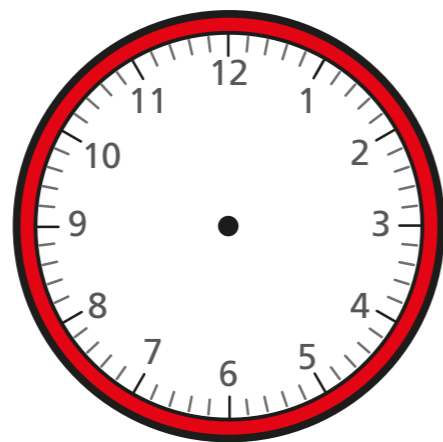
quarter past



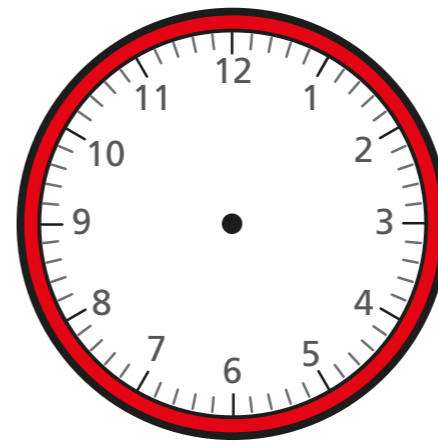
**4** Draw hands to show the time on each clock.



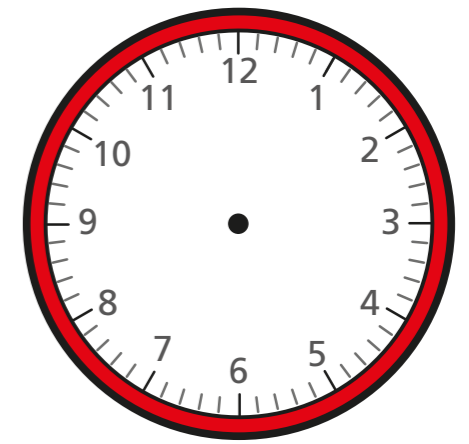
quarter past 11



quarter past 3

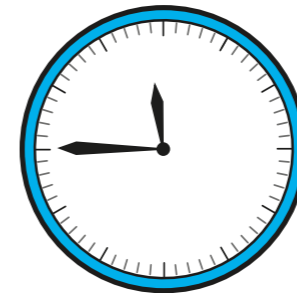


quarter to 4

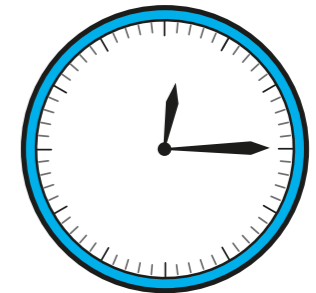


quarter to 1

**5** The clocks have no numerals.

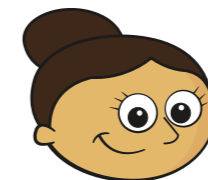



---




---

a)



You can still work out what time they show.

Why does Dora think this?

b) Write what time each clock shows.