



Martlesham Development Phase 1



April 2024





Emma Churchman – Headteacher

Lee Francis – REAch2 Head of Programme Management

Neil Eaton – Suffolk Council Project Lead

Martin Fisher – Seamans Building, Construction Director



Background

- Martlesham Primary currently has a capacity of 140 pupils at a PAN of 20.
- The current site consists of 5 classrooms, a hall, an ICT room, a library, along with auxiliary rooms such as toilets, staff room etc.
- A temporary unit (demountable) is located on the school site and did provide an additional classroom space but due to its poor condition is only used for storage.
- Phase 1 of the project will assess and improve the suitability of the existing accommodation without increasing the capacity. The main part of the project will be completely new purpose built classroom provision.

Benefits:

- Permanent, purpose-built accommodation, to provide additional space for pupils.
- Also, greater numbers of pupils receiving their first preference of Martlesham Primary Academy meaning the school has been at capacity now for a number of years.
- Future proofing of potential increases of pupil figures in this area in the future.

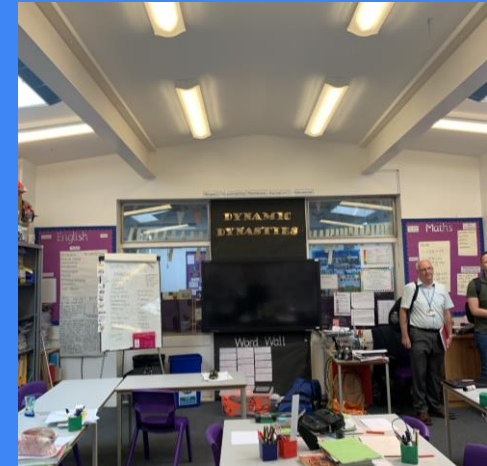


What's happening

Phase 1:

Phase 1 the Development Project at Martlesham Primary will be works being undertaken between late April 2024 to October 2024. Deliverables will include:

- A purpose built classroom situation at the end of the hard standing playground
- Removal/demolition of the demountable
- Internal refurbishment to a number of areas including:
 - Current Teaching Kitchen to become a SEN Resource area;
 - Refurbishment of KS2 Toilets;
 - Refurbishment of a class base.



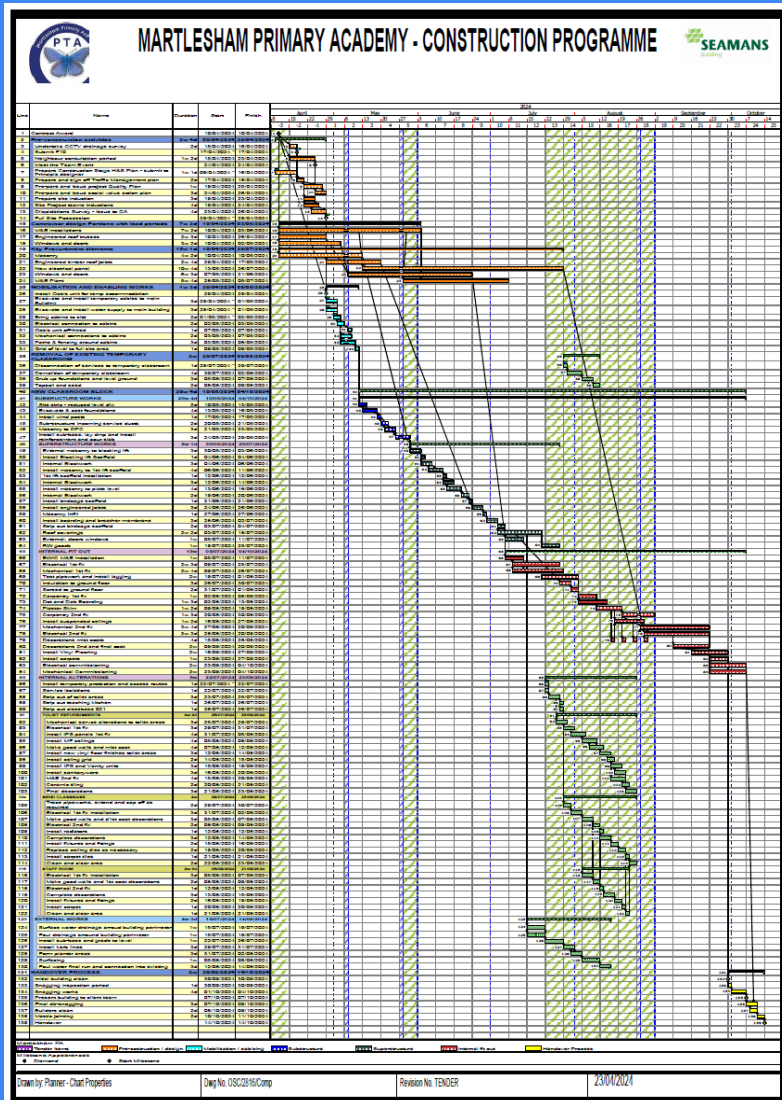
Our Partners

REAch2 Academy Trust and Martlesham Primary Academy are delighted to work with the following partners in order to deliver these improvement to our local school:

- **Seamans** – Lead Building contractor for the project.
- **Concertus** – Lead technical design and project delivery specialists
- **Suffolk County Council** – Funders and Lead Client working in collaboration with REAch2.



The Works



Classroom Block

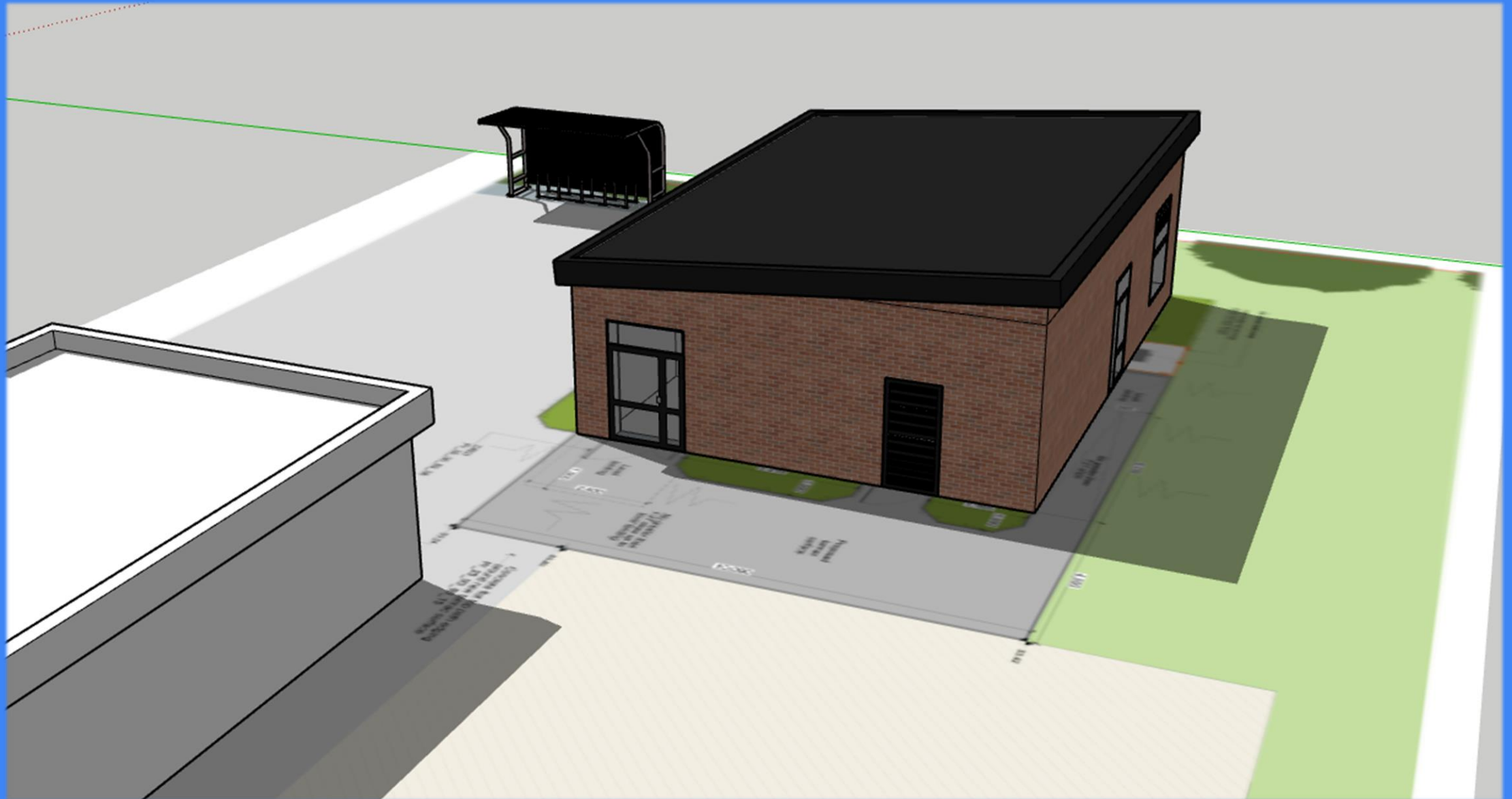
- Stand alone building of traditional masonry construction with aluminium doors and windows and a 3 layer Bitumen warm roof system.
- Works to commence 29th April (site accommodation and site fencing to be installed 27th April)
- Substructure works planned to be complete end of May
- Superstructure complete end of June
- Building due to be watertight Mid July
- Completion Mid October



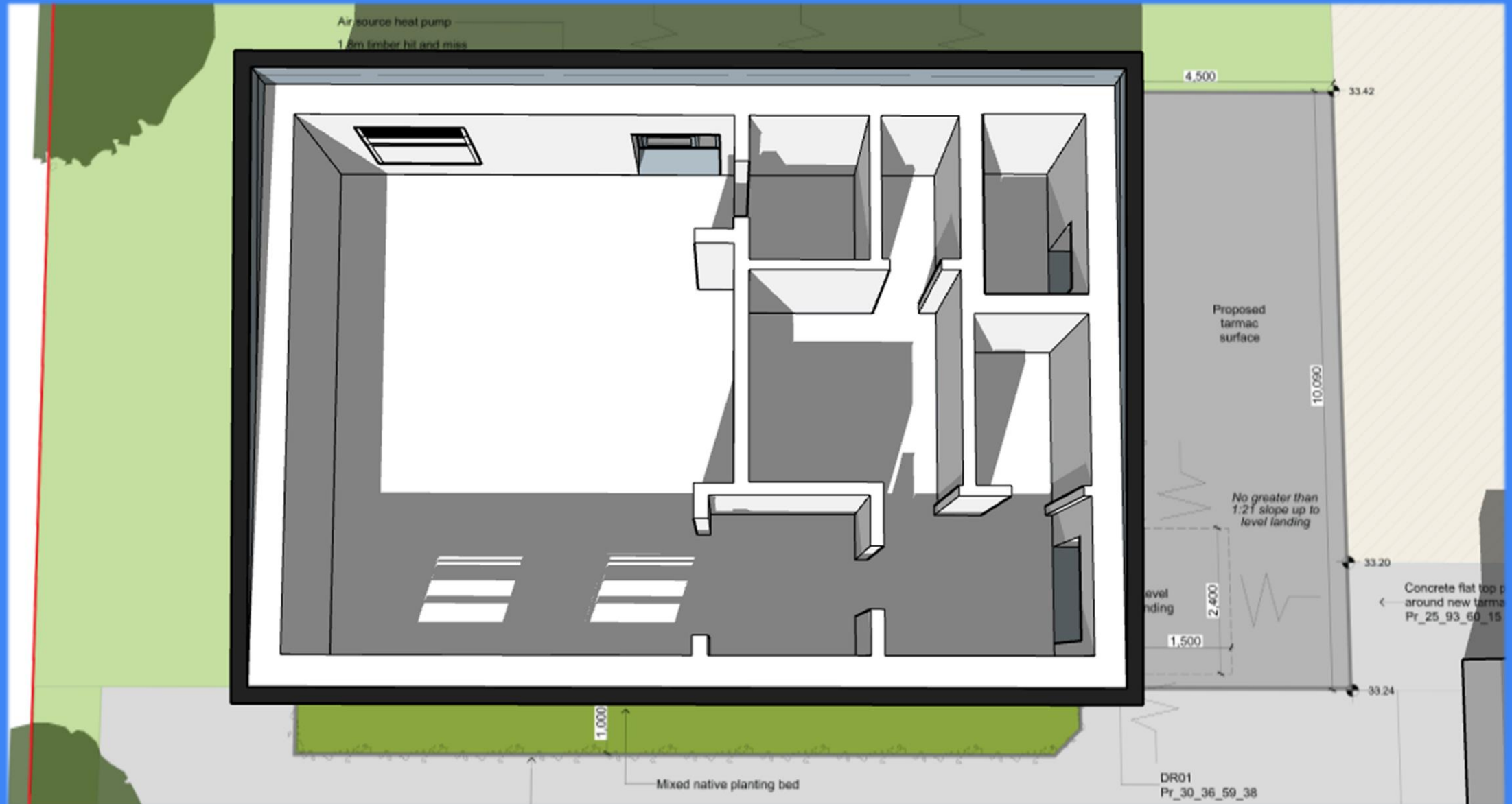
New Classroom Design



New Classroom Design



New Classroom Design





Site security
 Remotely monitored CCTV security system to be installed and maintained.
 Site perimeter to be securely enclosed and periodically checked to ensure secure.


Fire security
 Fire evacuation plans to be aligned with building users. Plans agreed and updated to ensure escape routes defined and maintained.
 Fire alarms systems to be linked ensure safety of staff and pupils

Air-lock style gate access to allow contractor access route to be sealed off and pupil access to be formed during agreed periods

Deris netting to be installed to fence line along this elevation to further segregate works where site boundary meets the school

Access Maintained to cycle shelters during term time works – access to school area achieve through managed air lock gates

Key

- Main Site Entrance Gates 
- Pupil Access Route 
- Contractors access 
- Solid fencing 
- Compound Heras Fencing 
- Contractor Compound 
- Material Storage Area 
- Contractor Parking 
- Site Welfare 
- Fire Muster Point 
- Construction Access Signage (Listing project specific details) 
- Rubbish Disposal 

Google



SEAMANS

Future Plans – Phase 2

There are continued assessments being carried out by the Local Authority on the future need for primary school places in the Martlesham area. There are a number of proposed housing developments in the local area which may see a further need for more school places in order to match demand.

Should this need come to fruition, then Suffolk County Council, REAch2 and Martlesham Primary will look to assess the possibility of increasing the PAN from 20 to 30, making the school a 1FE primary school, able to accommodate a total of 210 children (currently 140).

No plan for Phase 2 have been confirmed, however the deliverables of Phase 1 take into account the possibility of an expansion.





Any Questions?

